



LOOP-POWERED ANALOG!

H931

US Patent No. 6,005,760



Hawkeye® 931/951

Split-Core 4-20mA Output Loop-Powered Current Transducers with Patented Integral Command Relay

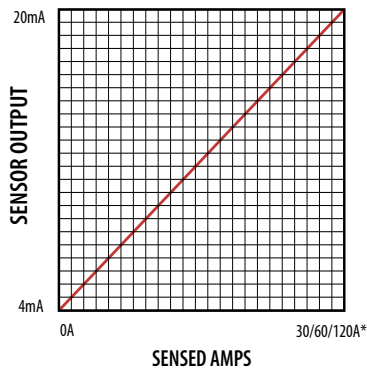
The Hawkeye 931/951 provide accurate load trending information with a proportional 4-20mA output signal. This combined with the integrated command relay makes these products ideal for start/stop and monitoring of motors.

The relay is fully isolated from the current sensor and all relay connections are externally available for maximum flexibility.

APPLICATIONS

- Load trending
- Motor control

H931/951 LINEAR OUTPUT
Scale software as shown



*Factory calibrated ranges selected with the amperage range switch

Loop powered analog current sensor with integral start/stop command relay

- Reduces the number of installed components...saves time and space
- Self-gripping split-core for fast retrofit installation... no need to remove conductor
- One device to install for start/stop & status...reduces installation charges
- Power the current sensor and receive the 4-20mA signal with only two wires...fewer wires required than with traditional 3-wire sensors

Selectable factory calibrated ranges up to 120A for increased flexibility and resolution

- Factory calibrated switch-selectable ranges (30/60/120A) for high resolution and installation ease
- No jumpers on unit...reduce installation error
- Mounting bracket for installation flexibility
- 24VAC/DC command relay switches up to 5A@250VAC
- 5-year limited warranty



ORDERING INFORMATION

MODEL	AMPERAGE RANGE	OUTPUT TYPE	COMMAND RELAY
H931	0-30/60/120A	4-20mA, loop powered	<input type="checkbox"/>
H951	0-30/60/120A	4-20mA, loop powered	<input checked="" type="checkbox"/>

H931 Coil = 24VAC/DC@15mA; Contact = Form A (SPST) 5(3)A@250VAC/DC, 1/8HP
 H951 Coil = 9-12VDC@20mA; Contact = Form A (SPST) 5(3)A@250VAC/DC, 1/8HP

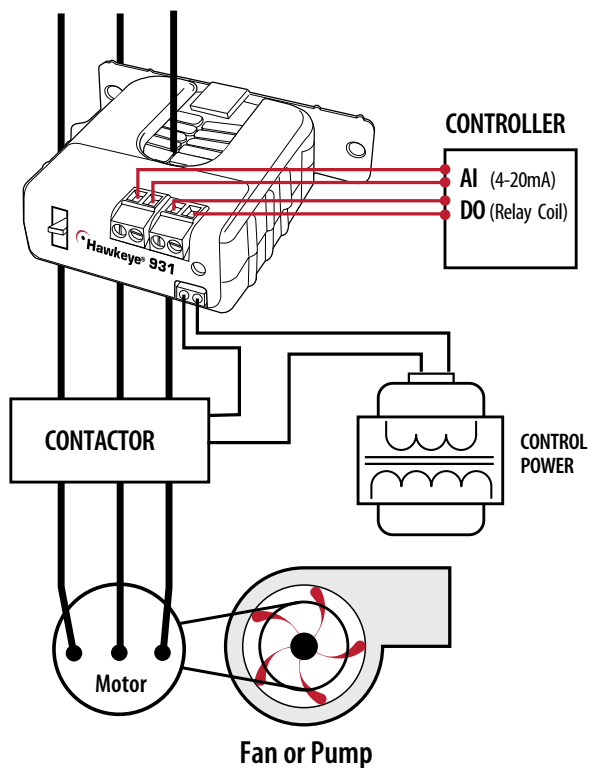


ACCESSORIES

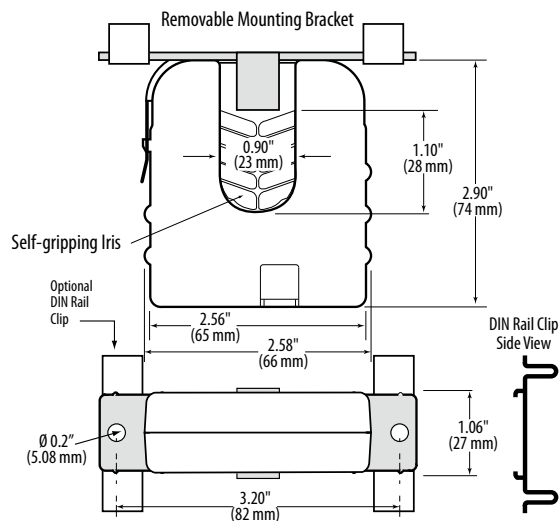
AH01 DIN Rail Clip Set, AH13 Relay Snubber (TVS)...See page 234

APPLICATIONS/WIRING EXAMPLE

Trending & Controlling Motor Loads with the Hawkeye 931



DIMENSIONAL DRAWINGS



SPECIFICATIONS

Amperage Range	0-30/60/120A
Sensor Power	12-30VDC loop
Insulation Class	600VAC rms
Frequency Range	50/60Hz. nominal
Temperature Range	-15° to 60°C
Humidity Range	0 - 95% non-condensing
Accuracy	±2% full scale from 10% to 100% of full scale
Relay Coil	15mA @ 24VAC/DC nom. (H931); 20mA @ 9-12VDC (H951)
Dimensions ... (LxWxH)	2.90" (74mm) x 2.58" (66mm) x 1.06" (27mm)
Sensor Opening Size ... (LxW)	1.10" (28mm) x .90" (23mm)